

# 11938MB (Special Edition)

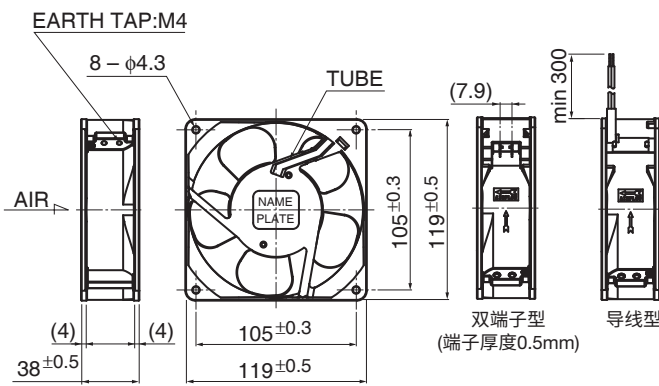
119□ × 38<sup>L</sup>

## AC Axial Fan



参考规格  
Reference Spec

### 外观图 Outline



\* 壳体仅限法兰型 Only flange type casing is available.  
\* 从铭牌侧可以看到管子的结构 The structure tubing can be seen from name plate side.

### 一般规格 General Specifications

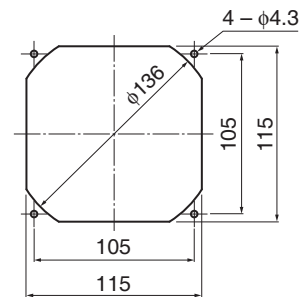
- 电机结构: 罩极式感应电机  
Motor Structure: Shaded Pole Induction Motor
- 电机保护: 阻抗保护  
Motor Protection: Impedance Protection
- 绝缘电阻: 用DC500V兆欧表测量, 应在100MΩ以上  
Insulation Resistance: Min 100MΩ by DC 500V Megger
- 绝缘耐压: AC1800V 3s  
Dielectric Withstand Voltage: AC1800V 3s
- 容许环境温度范围: -10°C~+70°C (Operating)  
Allowable Ambient Temperature Range: -40°C~+70°C (Storage)
- 正常使用状态下应无结露  
non-condensing environment

### 预期寿命 Expected Life

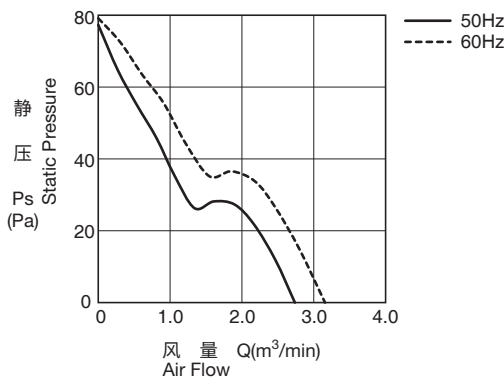
※故障率10% (L10使用寿命)  
※Failure Rate: 10%(L10 Life)  
25°C 100,000小时(Hours)

### 安装孔参考图 Panel Out-cuts

进气侧(Inlet Side) / 排气侧(Outlet Side)



### 特性曲线 Characteristic Curves



### 材质 Material

- 壳体: 铝合金(无涂装)  
Casing: Aluminum (No Paint)
  - 叶轮: 塑料(黑色)UL94V-0  
Impeller: Plastic (Black) UL94V-0
  - 轴承: 滚珠轴承  
Bearing: Ball Bearing
  - 端子: FASTON#110的同等产品  
Terminal: Faston#110 or Equiv
- \* 也可提供导线型。请另行咨询。  
Lead Wire type is also available.
- 导线: UL3266, AWG22  
Lead Wire

### 规格 Specifications

型号 Model	管理编号 Product No.	额定电压	频率	启动电压	额定电流	额定输入	额定转速	最大风量		最大静压		噪音	重量
		Rating Voltage (V)	Frequency (Hz)	Starting Voltage (V)	Current (A)*2	Input Power (W) <sup>+10% -20%</sup>	Speed (min <sup>-1</sup> )*3	m <sup>3</sup> /min)*3	CFM)*3	Max. Static Pressure (Pa)*3	(In H <sub>2</sub> O)*3	Noise (dB)*1	Mass (g)
11938MB-A0N-EA-	L0	100	50	65	0.270	15.0	2600	2.50	89.3	64.7	0.26	37.0	550
			60		0.230	14.0	2900	2.90	103.6	76.4	0.31	41.0	
11938MB-A1N-EA-	L0	115	50	65	0.250	15.5	2600	2.50	89.3	64.7	0.26	37.0	
			60		0.210	14.5	2900	2.90	103.6	76.4	0.31	41.0	
11938MB-B0N-EA-	L0	200	50	130	0.140	15.0	2600	2.50	89.3	64.7	0.26	37.0	
			60		0.120	13.0	2900	2.90	103.6	76.5	0.31	41.0	
11938MB-B2N-EA-	L0	220	50	145	0.120	14.0	2600	2.50	89.3	63.8	0.26	37.0	
			60		0.100	13.0	2900	2.90	103.6	75.6	0.30	41.0	
11938MB-B3N-EA-	L0	230	50	175	0.120	15.0	2600	2.50	89.3	63.8	0.26	37.0	
			60		0.100	14.0	2900	2.90	103.6	70.7	0.28	41.0	
11938MB-B4N-EA-	L0	240	50	140	0.110	14.0	2600	2.50	89.3	63.8	0.26	37.0	
			60		0.100	13.0	2900	2.90	103.6	65.7	0.26	41.0	

旋转方向: 从标签方向观察时为逆时针方向  
Rotation: Counterclockwise as seen from the label side  
送风方向: 标签侧  
Airflow Outlet: Label side

\*1: Average Values in Free Air  
\*2: Maximum Values in Free Air  
\*3: Minimum Values in Free Air

以上为参考规格, 最终规格可能会有变更。  
This information is reference spec, so final spec may change.